



HIGHTOWER

Estates & Trusts

A GUIDE TO PLANNING



LEVEL ONE

Must Haves

Goal: Plan for and document the transfer of assets per your wishes with minimized transfer costs.



Last Will and Testament

A will specifically spells out how you want your assets distributed and appoints guardians for any minor children.

Living Trust

A living trust avoids probate, allows for privacy, and designates how assets are to be divided upon your death.



Healthcare Power of Attorney

Designate an agent to make your healthcare decisions in the event you are unable to make them while you are living.

Financial/Property Power of Attorney

Designate an agent to make financial decisions in the event that you are unable to make them while you are living.

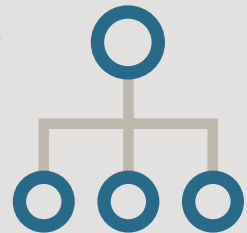


Review co-ownership provisions & account titling

Correct ownership and account titling ensure assets and accounts pass the way you intend.

Periodically review beneficiary designations

This is important as some assets (such as IRAs, Life Insurance, and Annuities) pass to your designated beneficiaries.



Upon life events (marriage, divorce, birth, adoption, etc.), review these aspects of your estate plan to ensure all information is up-to-date.

LEVEL TWO

Considerations

Goal: Further enhance the direction of assets, minimize estate taxes or increase asset protection.



Grantor Retained Annuity Trusts

Grantor Retained Annuity Trusts (GRAT) seek to pass assets to beneficiaries free of estate and gift tax that have appreciated over the IRS Section 7520 interest rate.

Charitable Options

Explore charitable giving options, such as Charitable Trusts, Donor-Advised Funds and Private Foundations, for both philanthropic and tax benefits.

Irrevocable Life Insurance Trust

Because life insurance is not necessarily estate tax free, consider establishing an Irrevocable Life Insurance Trust.

Qualified Personal Residence Trust

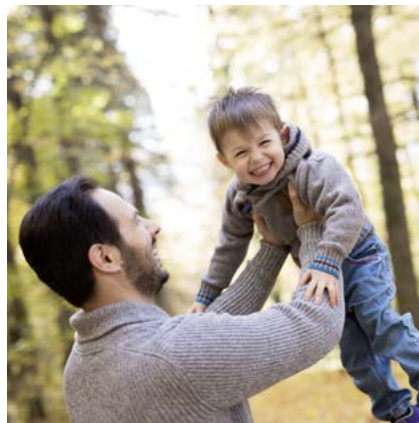
A Qualified Personal Residence Trust (QPRT) is a type of trust that allows its creator to remove a personal home from his or her estate.

Spousal Lifetime Access Trusts

Spousal Lifetime Access Trusts (SLATs) allow spouses to pass assets to each other and other loved ones free of estate and gift tax while maintaining limited, indirect access to the assets.

Intra-Family Loans

Intra-Family Loans can provide family members lower borrowing rates than traditional financing options.



Special Needs Trusts

A Special Needs Trust preserves a beneficiary's eligibility for needs-based government benefits.

LEVEL
THREE

Advanced

Goal: Consider options for complex estate tax issues or liability concerns.



Self-Cancelling Notes

Self-Cancelling Notes allow the exchange of property for periodic payments based upon mortality.



Trust-Friendly Jurisdictions

Certain states, including Delaware, have favorable trusts statutes, offering the potential to pass assets across generations without incurring transfer taxes (Dynasty Trusts), delegate responsibilities to non-trustees (Directed Trusts), protect assets and more.



Family LLPs & LLCs

Family Limited Liability Partnerships and LLCs provide legal, financial, and tax structure to family businesses.

What is portability?

Portability allows you to use your spouse's unused estate tax exclusion. While portability was made permanent for federal estate tax purposes, you should check if your resident state also allows for portability of a deceased spouse's unused estate exclusion. In the event your resident state does not allow for portability, it may make sense for both spouses to have assets in their respective name (or trust's name) up to the resident state's estate exclusion amount.

How Assets Pass Upon Death

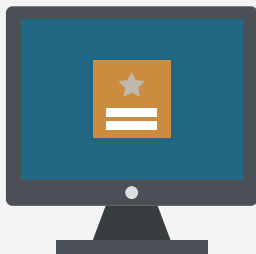
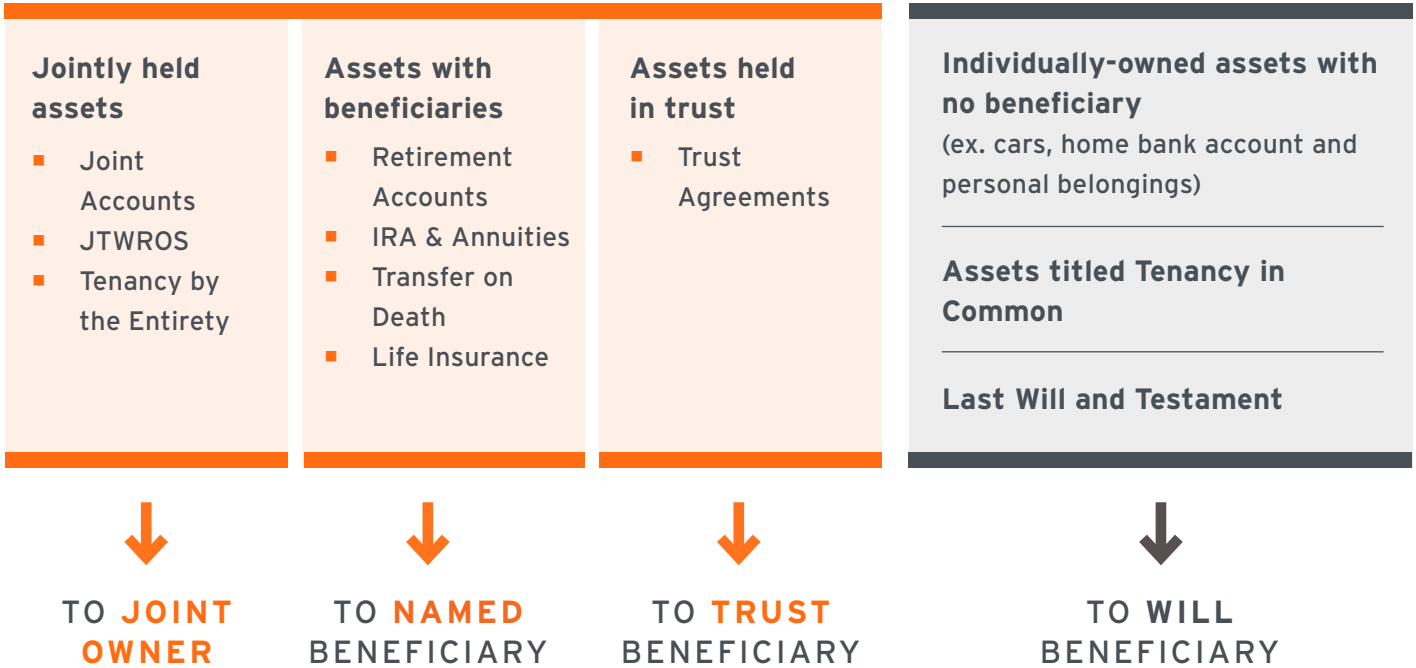
Probate vs Non-Probate Assets

Probate is a public court process that helps settle legal and financial matters upon death according to a will, if written.

Court costs, length of time, the lack of privacy and family disagreements are all potential issues that may arise within the probate process. With proper estate planning, you can limit the amount of assets that pass through probate.

ASSETS THAT BYPASS PROBATE

PROBATE ASSETS



Digital Assets

Nearly all 50 states have passed a version of the Uniform Law Commission's Fiduciary Access to Digital Assets Act, Revised that legally allows for an executor, trustee, etc. to access a deceased's digital accounts. Consider discussing your digital estate with your attorney and the potential need to share online access information with your executor or trustee.

How Assets Pass Upon Divorce

Marital vs Non-Marital Assets

Estate planning is not divorce planning. Without a pre- or post-nuptial agreement, marital assets are subject to equitable division in a divorce proceeding.

Effective for divorces finalized after January 1, 2019, alimony payments will no longer be tax-deductible by the paying spouse and will not be added to the taxable income of the receiving spouse.

Source: <https://www.irs.gov/taxtopics/tc452>

MARITAL ASSETS

Property Acquired During Marriage

Any property, real or personal, the couple acquired during the course of the marriage, regardless of title or who paid for it.



Retirement & Investment Accounts



Pensions



Homes & Vacation Homes



**SUBJECT TO
EQUITABLE DIVISION**

PROBATE ASSETS

Property Acquired Before Marriage

Any property, real or personal, acquired prior to the marriage, also including specific instances of property acquired during the course of the marriage by one spouse



Inheritance



Gifts



Any property owned prior to marriage



**NOT SUBJECT TO
EQUITABLE DIVISION**

Tainting of Assets

Non-marital assets may be tainted during the course of a marriage and may be treated as marital assets in a divorce proceeding. For example, if a spouse deposits a personal inheritance into a joint account or uses income from an inheritance to support the couple's lifestyle, this non-marital asset may be treated as a marital asset.

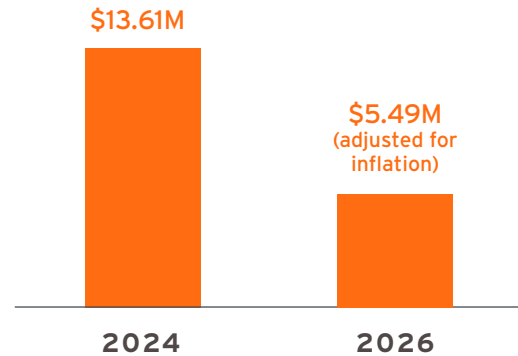


Estate Planning Updates

A Window of Opportunity

- The Tax Cuts and Jobs Act (TCJA) of 2017 significantly increased the estate exclusion amount (presently \$13.61M million for 2024), though there had been concern that individuals taking advantage of the higher exclusion amount might one day owe additional tax for prior gifts, should the estate exclusion decrease after 2025.
- The Treasury Department and IRS later issued final regulations that individuals utilizing the increased gift and estate tax exclusion amounts from 2018 to 2025 would not be adversely impacted after 2025, should the exclusion revert to pre-2018 levels.
- Key Takeaway: Individuals who have - or are likely to have - a taxable estate and who have sufficient assets to fund expenses during their lifetime may want to consider gifting additional assets to loved ones while the increased exclusion amount still stands.

INCREASED ESTATE EXCLUSION & LIFETIME GIFTING AMOUNT SCHEDULED TO SUNSET



	2024
Estate Exclusion / Lifetime Gifting Exemption	\$13.61M
Maximum Estate Tax Rate	40%
Maximum Gift Tax Rate	40%
Annual Exclusion Gift	\$18,000
Annual Gifting Limit to U.S. Citizen Spouse	Unlimited
Annual Gifting Limit to Non-U.S. Citizen Spouse	\$185,000

Source: Taylor, K. "What is the Gift Tax Exclusion for 2024?," Kiplinger, January 19, 2024, <https://www.kiplinger.com/taxes/gift-tax-exclusion>. Accessed January 19, 2024. Copyright © 2023, PGI Partners, Inc., 921 East 86th Street, Suite 100, Indianapolis, Indiana 46240. All rights reserved.

Source: <https://www.irs.gov/newsroom/irs-provides-tax-inflation-adjustments-for-tax-year-2024>

Irrevocable Trusts

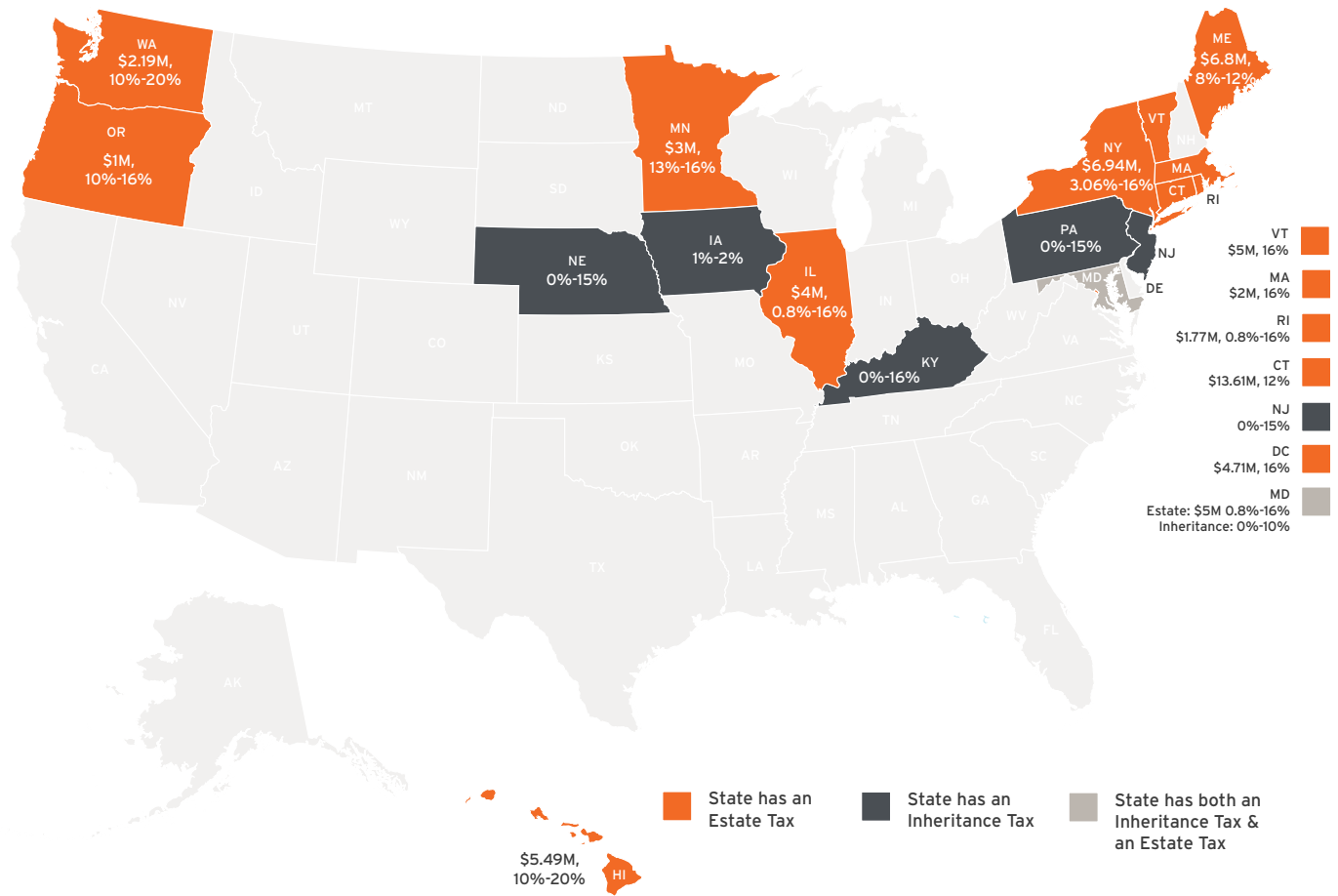
An irrevocable trust is a type of trust where its terms can't be modified, amended, or terminated without the permission of the grantor's named beneficiary or beneficiaries. These types of trusts have many applications but are typically used in planning for the preservation and distribution of an estate. Some specific uses may include:

- To take advantage of the estate tax exemption and remove taxable assets from the estate. Property transferred to an irrevocable living trust does not count toward the gross value of an estate.
- To prevent beneficiaries from misusing assets, the grantor can set conditions for distribution.
- To remove appreciable assets from the estate while still providing beneficiaries with a step-up basis in valuing the assets for tax purposes.
- To gift a principal residence to children under more favorable tax rules.
- To house a life insurance policy that would effectively remove the death proceeds from the estate.

Keep in mind, an irrevocable trust is a more complex legal arrangement than a revocable trust, mainly because of the tax implications. Be sure to seek a professional's guidance when setting up an irrevocable trust.

Don't Forget Estate Tax at the State Level!

Many states have estate exclusions far below the federal level which may result in state estate taxes. Older estate plans should be reviewed to ensure trust provisions incorporate current federal and state estate tax limits.



Source: Waggoner, J. "17 States With Estate or Inheritance Taxes," AARP, March 11, 2022, <https://www.aarp.org/money/taxes/info-2020/states-with-estate-inheritance-taxes.html>. Accessed April 13, 2022.

Source: Because You Asked "State Estate Taxes," John Hancock, March 03, 2023 LIFE-5106 3/23.

Source: "Iowa Inheritance Tax Rates 2023" <https://tax.iowa.gov/sites/default/files/2023-11/TaxRateSch2023%2860012%29.pdf> Accessed January 31, 2024.

Source: "Iowa Code 2024, Section 450.10" <https://www.legis.iowa.gov> Accessed January 31, 2024.

Source: "Does Your State Have an Estate or Inheritance Tax?" <https://taxfoundation.org/data/all/state/state-estate-tax-inheritance-tax-2023/> Accessed February 8, 2024.



HIGHTOWER

200 W MADISON, 25TH FLOOR
CHICAGO, IL 60606
(312) 962-3800
HIGHTOWERADVISORS.COM

All securities are offered through Hightower Securities, LLC, member FINRA and SIPC, and advisory services are offered through Hightower Advisors, LLC, a SEC registered investment advisor. In preparing these materials, we have relied upon and assumed without independent verification, the accuracy and completeness of all information available from public and internal sources. Hightower shall not in any way be liable for claims and make no expressed or implied representations or warranties as to their accuracy or completeness or for statements or errors contained in or omissions from them. This is not an offer to buy or sell securities. No investment process is free of risk and there is no guarantee that the investment process described herein will be profitable. Investors may lose all of their investments. Past performance is not indicative of current or future performance and is not a guarantee. This document was created for informational purposes only; the opinions expressed are solely those of the author, and do not represent those of Hightower Advisors, LLC or any of its affiliates.

Hightower Advisors, LLC is an SEC registered investment advisor. Securities are offered through Hightower Securities, LLC member FINRA and SIPC. Hightower Advisors, LLC or any of its affiliates do not provide tax or legal advice. This material is not intended or written to provide and should not be relied upon or used as a substitute for tax or legal advice. Information contained herein does not consider an individual's or entity's specific circumstances or applicable governing law, which may vary from jurisdiction to jurisdiction and be subject to change. Clients are urged to consult their tax or legal advisor for related questions.